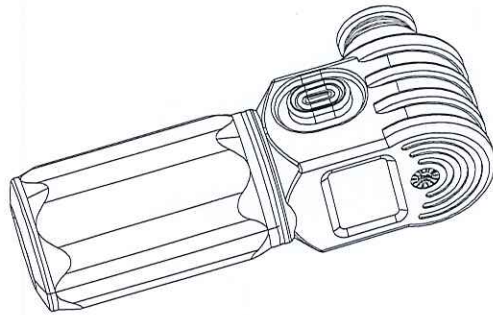
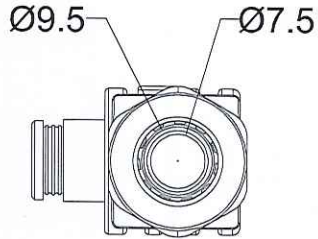
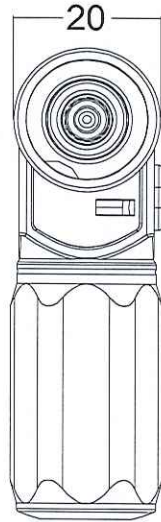
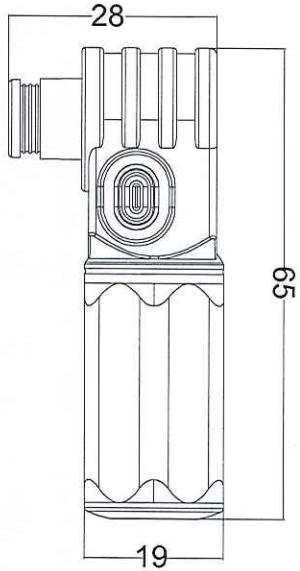


The product using material and processing must conform to the "WL-PZ-001"HSF technical standard control requirements

RoHS

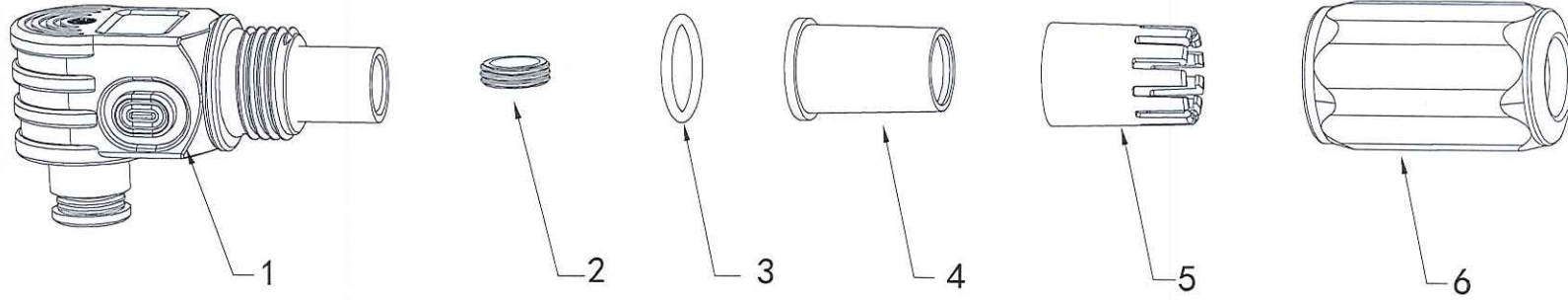


零部件料号 Part P/N	适用电缆规格 Cable Spec	
连接器 Connector	(导体截面(mm ²) Conductor Size)	电缆外径(ØD mm) Cable OD
底座	AWG6 (16mm ²)	Ø7.5~Ø9.5
线端	AWG4 (25mm ²)	
绝缘材料 Insulation material	PA66	
额定电流 Rated current	120A (16mm ² -25mm ²) max	
额定电压 Rated voltage	1000V (TUV)	
环境温度范围 Ambient temperature range	-40°C to +125°C	
保护等级 Degree of protection	IP2X/IP67	
过压等级 Safety class	II	
阻燃等级 Flame class	UL94-V0	
插入力 Insertion force	≤35N	
拔出力 Withdrawal force	≥8.5N	
金属导体材料 Contact material	紫铜, 镀银 Red Copper, Silver Plated	
接触电阻 Contact resistance	<0.5mΩ	
绝缘电阻 Insulation Resistance	室温下 >2GΩ 高温下 (125°C) >100MΩ	
温升 Temperature rise	45K max	
适配电缆 Suitable cable cross sections	16mm ² -25mm ² AWG6/4	
连接方式 Connecting system	压接 Crimp connection	

REV.	REVISION RECORD	DATE		GENERAL TOLERANCES		SCALE: 1:1	NAME	DATE	PART.NO:	DWG.NO:		
A0	NEW RELEASE	21.10.23		LINEAR	ANGLES	APPROVED	车忠浩	21.10.23	ES12	ENDE05		
			UNIT:mm	0.00±0.25	X'±3'	DESIGNER	张红华	21.10.23	TITLE:	ES12系列 单芯储能连接器	REV: A0	SHEET: 1/2
			SIZE: A4	0.000±0.10	X'X' ±2'	DRAWN	侯兰宜	21.10.23				

The product using material and processing must conform to the "WL-PZ-001"HSF technical standard control requirements

RoHS



BILL OF MATERIALS

No.	产品名称 PartName	Q' TY
1	连接器插头 Connector plug	1
2	V型密封圈 V-Ring	1
3	M15密封圈 M15*1.8 0 Ring	1
4	接头电缆防水圈 Cable Seal Ring	1
5	卡爪 Claw	1
6	旋帽 M16*34 Screw Cap	1

ES012PN-06001N201	60A(16mm ²)	负极(黑色)
ES012PN-06001N101	60A(16mm ²)	正极(橙色)
ES012PN-12001N201	120A(25mm ²)	负极(黑色)
ES012PN-12001N101	120A(25mm ²)	正极(橙色)
Part No.	CURRENT RATING	ELECTRODE&COLOR

REV.	REVISION RECORD	DATE	GENERAL TOLERANCES	SCALE:	NAME	DATE	PART.NO.:	DWG.NO.:
A0	NEW RELEASE	21.10.23	LINEAR	1:1	车忠浩	21.10.23	ES12	ENDE05
			0.0±0.35		张宇峰	21.10.23		
			0.00±0.25		侯兰霞	21.10.23		
			0.000±0.10					

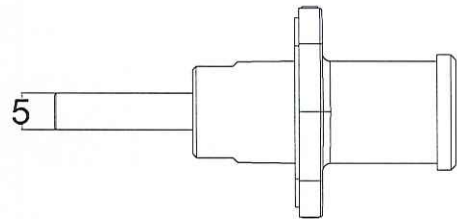


WanLian Technology Co., Ltd
REV: A0 SHEET: 2/2

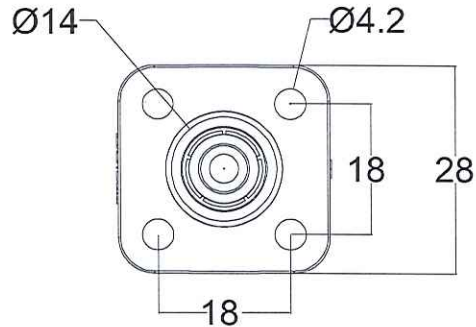


The product using material and processing must conform to the "WL-PZ-001"HSF technical standard control requirements

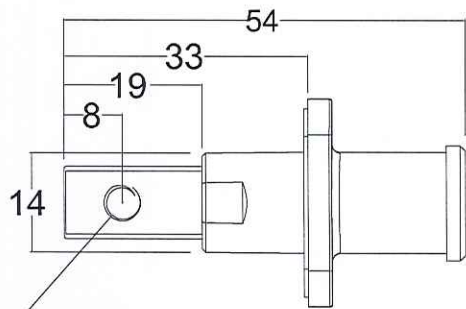
RoHS



插座五金厚度

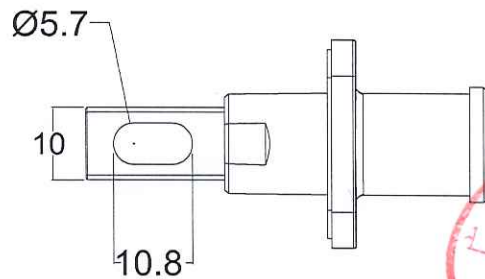


插座孔位尺寸



M5螺纹

M5螺纹孔插座



腰型孔插座

零部件料号 Part P/N	适用电缆规格 Cable Spec	
连接器 Connector	(导体截面(mm ²) Conductor Size)	电缆外径(ØD mm) Cable OD
底座	AWG6 (16mm ²) AWG4 (25mm ²)	ø7.5~ø9.5
线端		
绝缘材料 Insulation material	PA66	
额定电流 Rated current	120A (16mm ² -25mm ²) max	
额定电压 Rated voltage	1000V (TUV)	
环境温度范围 Ambient temperature range	-40°C to +125°C	
保护等级 Degree of protection	IP2X/IP67	
过压等级 Safety class	II	
阻燃等级 Flame class	UL94-V0	
插入力 Insertion force	≤35N	
拔出力 Withdrawal force	≥8.5N	
金属导体材料 Contact material	紫铜, 镀银 Red Copper, Silver Plated	
接触电阻 Contact resistance	<0.5mΩ	
绝缘电阻 Insulation Resistance	室温下 >2GΩ 高温下 (125°C) >100MΩ	
温升 Temperature rise	45K max	
适配电缆 Suitable cable cross sections	16mm ² -25mm ² AWG6/4	
连接方式 Connecting system	压接 Crimp connection	

REV.	REVISION RECORD	DATE	GENERAL TOLERANCES	SCALE: 1:1	NAME	DATE	PART.NO:	DWG.NO:
A0	NEW RELEASE	21.10.23	LINEAR 0.0±0.35		车忠浩	21.10.23	ES12	ENDE05
			ANGLES X° REF ±6°		李宇坤	21.10.23		
			UNIT:mm 0.00±0.25		侯兰霞	21.10.23		
			SIZE: A4 0.000±0.10				TITLE: BS12系列 单芯储能连接器	



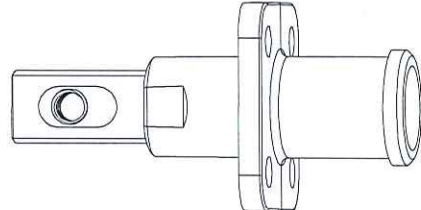
REV: A0 SHEET: 1/2

The product using material and processing must conform to the "WL-PZ-001"HSF technical standard control requirements

RoHS



1



2

ES012SN-12001N X 001

HOLE TYPE:
1-M5螺纹孔
2-腰型孔



BILL OF MATERIALS

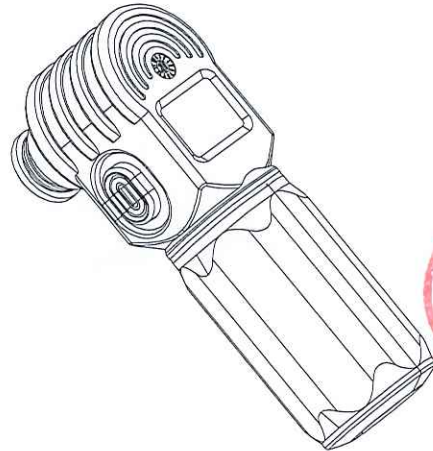
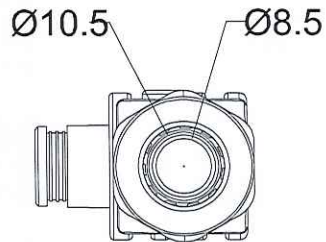
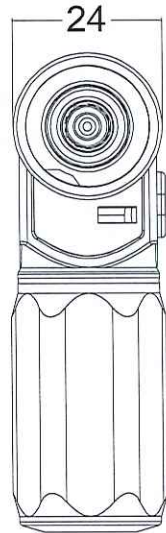
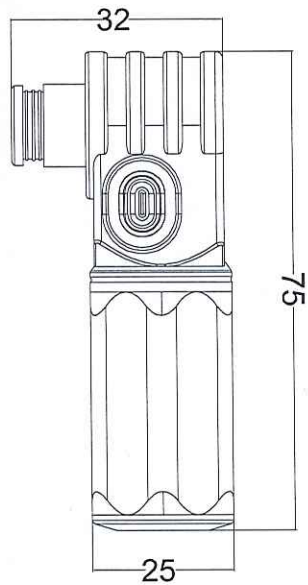
No.	产品名称 PartName	Q' TY
1	密封垫 Sealing gasket	1
2	插座 Socket	1

Part No.	CURRENT RATING	ELECTRODE&COLOR	NOTE
ES012SN-12001N1201	120A MAX	负极(黑色)	M5螺纹孔
ES012SN-12001N1101	120A MAX	正极(橙色)	M5螺纹孔
ES012SN-12001N2201	120A MAX	负极(黑色)	腰型孔
ES012SN-12001N2101	120A MAX	正极(橙色)	腰型孔

REV.	REVISION RECORD	DATE	SCALE:	NAME	DATE	PART.NO:	DWG.NO:	 WanLian Technology Co., Ltd	
AO	NEW RELEASE	21.10.23	1:1	车忠清	21.10.23	ES12	ENDE05		
			APPROVED	张宇峰	21.10.23				
			DESIGNER	侯兰霞	21.10.23	TITLE:			
			SCALE:	NAME <td>DATE <td>PART.NO:</td> <td>DWG.NO:</td> <td>REV: AO</td> <td>SHEET: 2/2</td> </td>	DATE <td>PART.NO:</td> <td>DWG.NO:</td> <td>REV: AO</td> <td>SHEET: 2/2</td>	PART.NO:	DWG.NO:	REV: AO	SHEET: 2/2
			1:1						
			APPROVED	车忠清	21.10.23	ES12	ENDE05		
			DESIGNER	张宇峰	21.10.23				
			DRAWN	侯兰霞	21.10.23	TITLE:			
						ES12系列 单芯储能连接器			

The product using material and processing must conform to the "WL-PZ-001"HSF technical standard control requirements

RoHS

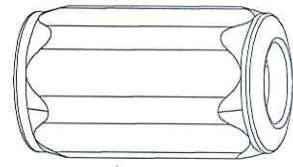
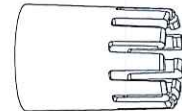
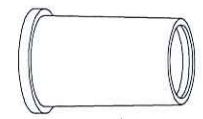
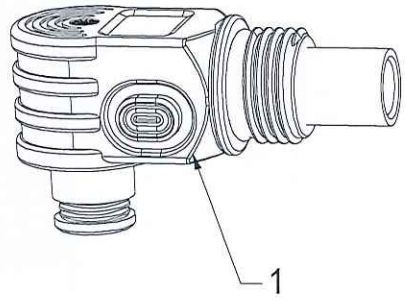


零部件	适用电缆规格 Cable Spec	
连接器 Connector	(导体截面(mm ²) Conductor Size)	电缆外径(ØD mm) Cable ØD
底座	3AWG (35mm ²) 2AWG (50mm ²)	Ø11mm~Ø13mm
线端		
绝缘材料 Insulation material	进口PC料	
额定电流 Rated current	200A (35mm ² -50mm ²) max	
额定电压 Rated voltage	1000V (TUV)	
环境温度范围 Ambient temperature range	-40°C to +125°C	
保护等级 Degree of protection	IP2X/IP67	
过压等级 Safety class	II	
阻燃等级 Flame class	UL94-V0	
插入力 Insertion force	≤35N	
拔出力 Withdrawal force	≥8.5N	
金属导体材料 Contact material	紫铜, 镀银 Red Copper, Silver Plated	
接触电阻 Contact resistance	<0.5mΩ	
绝缘电阻 Insulation Resistance	室温下 >2GΩ 高温下 (125°C) >100MΩ	
温升 Temperature rise	45K max	
适配电缆 Suitable cable cross sections	35mm ² -50mm ² 3AWG/2AWG	
连接方式 Connecting system	压接 Crimp connection	

REV.	REVISION RECORD	DATE		GENERAL TOLERANCES		SCALE: 1:1	NAME	DATE	PART.NO: ES12	DWG.NO: ENDE05	
AO	NEW RELEASE	21.10.23		LINEAR	ANGLES	APPROVED	车忠浩	21.10.23			
			UNIT:mm	0.00±0.25	X°±3'	DESIGNER	李宇坤	21.10.23	TITLE: ES12系列 单芯储能连接器		
			SIZE: A4	0.000±0.10	X°X'±2"	DRAWN	侯兰富	21.10.23			REV: AO SHEET: 1/2

The product using material and processing must conform to the "WL-PZ-001"HSF technical standard control requirements

RoHS



BILL OF MATERIALS

No.	产品名称 PartName	Q' TY
1	连接器插头 Connector plug	1
2	V型密封圈 V-Ring	1
3	M15密封圈 M17*1.8 O Ring	1
4	接头电缆防水圈 Cable Seal Ring	1
5	卡爪 Claw	1
6	旋帽 M19*38 Screw Cap	1



Part No.	CURRENT RATING	ELECTRODE&COLOR
ES012PN-15001N201	150A(35mm ²)	负极(黑色)
ES012PN-15001N101	150A(35mm ²)	正极(橙色)
ES012PN-20001N201	200A(50mm ²)	负极(黑色)
ES012PN-20001N101	200A(50mm ²)	正极(橙色)

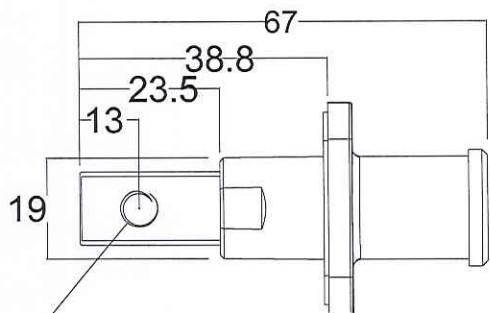
REV.	REVISION RECORD	DATE	GENERAL TOLERANCES	SCALE:	NAME	DATE	PART.NO:	DWG.NO:
A0	NEW RELEASE	21.10.23	LINEAR	1:1	东忠浩	21.10.23	ES12	ENDE05
			ANGLES		侯兰官	21.10.23		
			0.0±0.35					
			X°REF±6°					
			UNIT:mm				TITLE:	
			0.00±0.25				ES12系列 单芯储能连接器	
			X°±3°					
			SIZE: A4					
			0.000±0.10					
			X°X'±2°					

WanLian Technology Co., Ltd

REV: A0 SHEET: 2/2

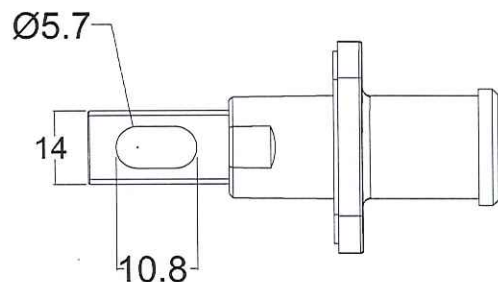
The product using material and processing must conform to the "WL-PZ-001"HSF technical standard control requirements

RoHS

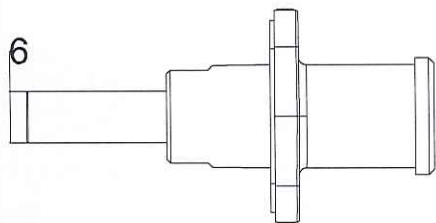


M6螺纹

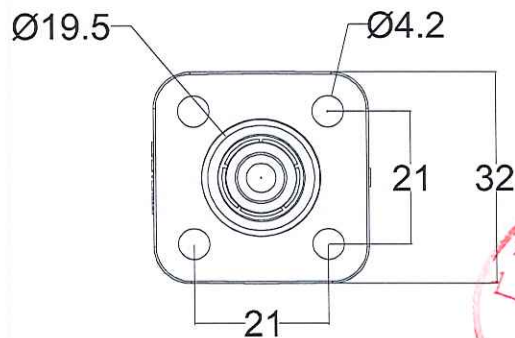
M6螺纹孔插座



腰型孔插座



插座五金厚度



插座孔位尺寸

零部件	适用电缆规格 Cable Spec	
连接器 Connector	(导体截面(mm ²) Conductor Size	电缆外径(ØD mm) Cable ØD
底座	3AWG (35mm ²) 2AWG (50mm ²)	ø11mm~ø13mm
线端		
绝缘材料 Insulation material	进口PC料	
额定电流 Rated current	200A (35mm ² -50mm ²) max	
额定电压 Rated voltage	1000V (TUV)	
环境温度范围 Ambient temperature range	-40°C to +125°C	
保护等级 Degree of protection	IP2X/IP67	
过压等级 Safety class	II	
阻燃等级 Flame class	UL94-V0	
插入力 Insertion force	≤35N	
拔出力 Withdrawal force	≥8.5N	
金属导体材料 Contact material	紫铜, 镀银 Red Copper, Silver Plated	
接触电阻 Contact resistance	<0.5mΩ	
绝缘电阻 Insulation Resistance	室温下 >2GΩ 高温下 (125°C) >100MΩ	
温升 Temperature rise	45K max	
适配电缆 Suitable cable cross sections	35mm ² -50mm ² 3AWG/2AWG	
连接方式 Connecting system	压接 Crimp connection	

REV.	REVISION RECORD	DATE	GENERAL TOLERANCES	SCALE:	NAME	DATE	PART.NO:	DWG.NO:
AO	NEW RELEASE	21.10.23	LINEAR 0.0±0.35	1:1	东忠浩	21.10.23	ES12	ENDE05
			ANGLES X° REF±6°	APPROVED	李学印	21.10.23		
			UNIT:mm 0.00±0.25	DESIGNER	侯兰霞	21.10.23		
			SIZE: A4 0.000±0.10	DRAWN				
							TITLE:	
							ES12系列 单芯储能连接器	
							REV: AO	SHEET: 1/2



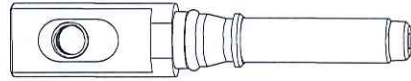
WanLian Technology Co., Ltd

The product using material and processing must conform to the "WL-PZ-001"HSF technical standard control requirements

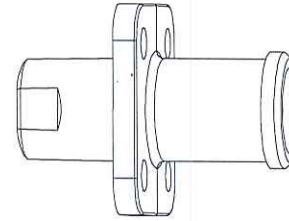
RoHS



1



2



3

ES012SN-20001N X 201

HOLE TYPE:
1-M6螺纹孔
2-腰型孔



BILL OF MATERIALS

No.	产品名称 PartName	Q' TY
1	密封垫 Sealing gasket	1
2	插针 Contact pin $\phi 8\text{mm}$	1
3	插座 Socket	1

ES012SN-20001N1201	200A MAX	负极(黑色)	M6螺纹孔
ES012SN-20001N1101	200A MAX	正极(橙色)	M6螺纹孔
ES012SN-20001N2201	200A MAX	负极(黑色)	腰型孔
ES012SN-20001N2101	200A MAX	正极(橙色)	腰型孔
Part No.	CURRENT RATING	ELECTRODE&COLOR	NOTE

REV.	REVISION RECORD	DATE	GENERAL TOLERANCES	SCALE:	NAME	DATE	PART.NO:	DWG.NO:
A0	NEW RELEASE	21.10.23	LINEAR	1:1	车忠浩	21.10.23	ES12	ENDE05
			ANGLES	APPROVED	李冲	21.10.23		
			0.0 \pm 0.35	DESIGNER	侯总	21.10.23		
			X'REF \pm 6'	DRAWN	侯总	21.10.23		
			UNIT:mm				TITLE:	
			0.00 \pm 0.25				ES12系列 单芯储能连接器	
			X' \pm 3'					
			SIZE: A4					
			0.000 \pm 0.10					
			X'X' \pm 2'					



REV: A0 SHEET: 2/2